



GREATER LOS ANGELES SCOUTING

2333 Scout Way | Los Angeles, CA 90026 | 213.413.4400 | GreaterLAScouting.org

ROSE BOWL DISTRICT FRIENDS OF SCOUTING ANNUAL GIVING CAMPAIGN

The Friends of Scouting campaign is an investment beyond national membership fees and basic registration, which cover only a fraction of Scouting’s costs. Without your support, our council’s infrastructure, programs, and volunteer training are at risk, potentially leading to camp closures and fewer opportunities for Scouts. Your contribution helps keep camp fees affordable, strengthens council infrastructure, maintains camp properties, enhances volunteer training, and funds camperships and Scoutreach, ensuring all Scouts can experience life-changing programs.

OUR COUNCIL

SCOUTING IS FOR EVERYONE!



Scouts are more likely to have positive character attributes such as kindness, trustworthiness, and helpfulness.

Eagle Scouts are 76% more likely to be community leaders.

Scouts are twice more likely to earn a Bachelor’s degree.

When you give to Scouting, you help create a safe place where every kid belongs, grows and achieves.

Greater LA Scouting is a 501(c)3 organization Tax ID #95-1643982 and receives no government assistance.

The Cost of Scouting

SCOUTREACH is our commitment to making sure that all young people have an opportunity to join Scouting.

Expenses

| | |
|----------------------|--------------------|
| 2024** Actual | 2025 Budget |
| \$7,697,401 | \$7,674,836 |
| (\$842,108) | |

** unaudited financials

Field Services

\$2,498,349

Scout Stores

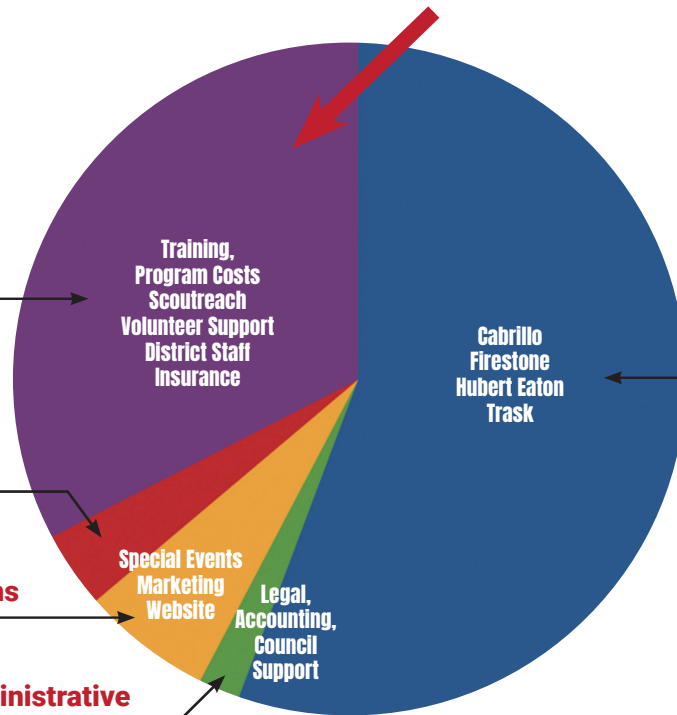
\$276,140

Development & Communications

\$472,299

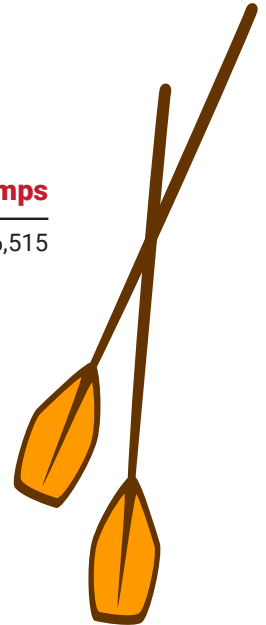
General and Administrative

\$151,533



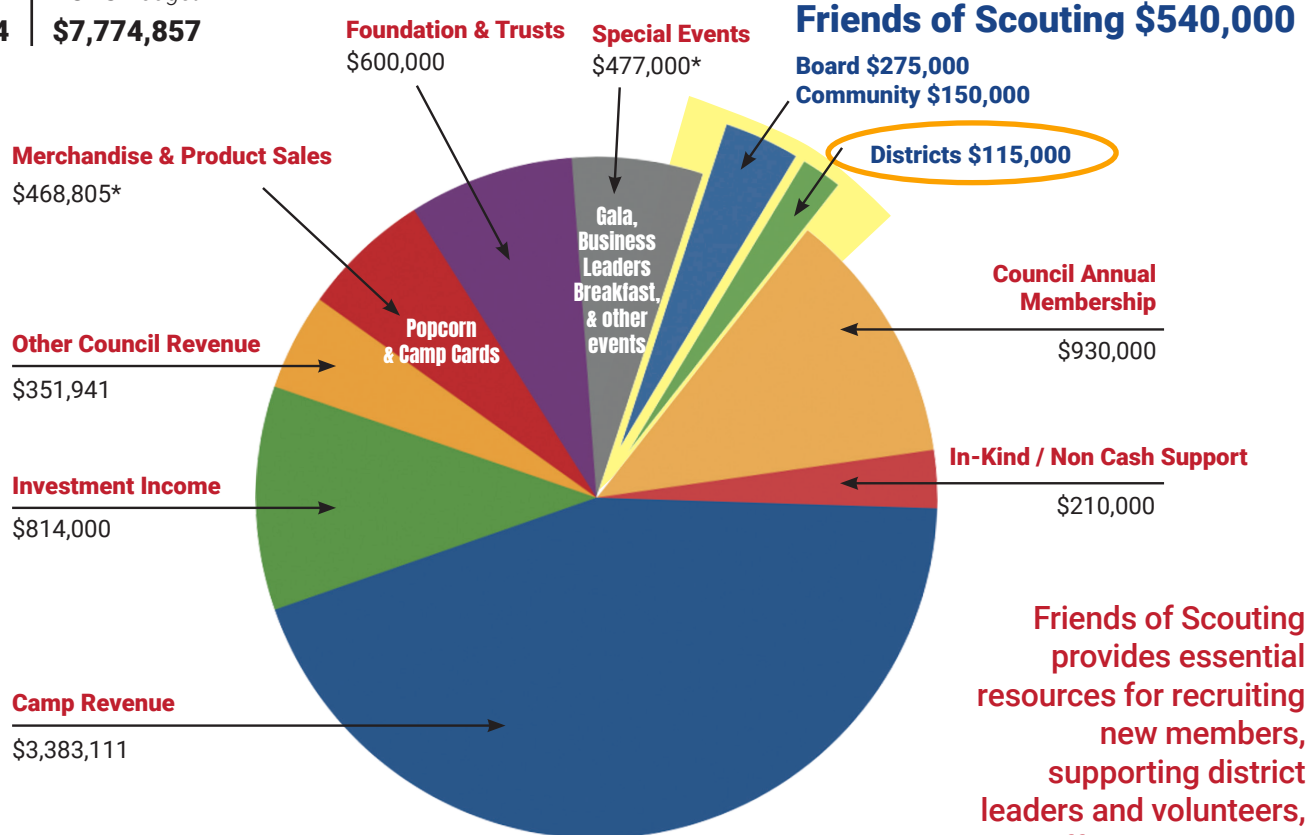
Camps

\$4,276,515



Revenue

| | |
|--------------------|--------------------|
| 2024 Actual | 2025 Budget |
| \$6,855,294 | \$7,774,857 |



* Net of cost

Friends of Scouting provides essential resources for recruiting new members, supporting district leaders and volunteers, and offering marketing tools to grow Scouting.



12,729 Total Youth Impacted

11,409 Youth Members

4,624 Adult Volunteers

1,623 girls enrolled in programs K-12

432 Total number of units



962 Received Scoutreach and Campership support with annual dues, uniforms, and camp attendance

95% Units retained and renewed.

413 Eagle Scouts



6 Belcher Scholarships valued at \$21,000 awarded to Eagle Scouts

69,575 Hours of community Service



19,391 Merit Badges Earned

72 Cities and unincorporated areas served by Greater LA Scouting

958 Explorers immersed in a job field



19 Rotary Scholarships provided



2,055 Summer resident campers

430 Female campers at resident camp



424 Trail to Eagle youth participants at Trask Scout Reservation



Capital investments in Camp Trask include new showers, restrooms and activity center. Repairs and upgrade to electrical systems, and storm repairs

3592 Weekend and overnight participants at Cabrillo Beach Youth Center



Capital investments in Cabrillo supported new pool heaters, amphitheater seating replacement and electrical upgrades

19,198 Nights camped at Camp Hubert Eaton Scout Reservation



Capital investments in HESR supported sidewalks and railing installation, pools and roads repair, and tree work.

526 Attended Rocket Academy at Firestone Scout Reservation.



Capital improvements made to trading post and ranges.



Scouting has given me invaluable communication skills. Being in a leadership position meant that I was the point of communication between the Scouts and the adult leaders. - Anjali R., Eagle Scout

Programs



Cub Scouts
youth grades
K-6



Scouts BSA
youth ages
11-17



Sea Scouts
youth and young
adults 14-20



Exploring
youth and young
adults 14-20



Venturing
youth and young
adults 14-20

Camps

**Cabrillo Beach Youth Center
Firestone Scout Reservation
Hubert Eaton Scout Reservation
Trask Scout Reservation**

Supporting Friends of Scouting is an investment in the future of our youth and the community by helping young people develop the skills and values they need to become responsible citizens and leaders.

greaterlascouting.org/support-scouting

I/We would like to support with:

\$2500 \$1000 \$500 \$250 \$50 \$25

Other \$ _____

A monthly gift of: \$250 \$100 \$50 \$35 \$20

Method of Payment

Charge my: VISA MC AMEX DISCOVER

Card # _____ Exp. Date _____

Name _____ Code _____

Signature _____

Check is enclosed, payable to Greater LA Scouting

I'm a part of

(Optional)

- | | |
|--------------------------------------|--|
| <input type="radio"/> El Camino Real | <input type="radio"/> Pio Pico |
| <input type="radio"/> Exploring | <input type="radio"/> Pacifica |
| <input type="radio"/> Metropolitan | <input type="radio"/> San Gabriel Valley |
| <input type="radio"/> Pio Pico | <input type="radio"/> I don't know |



Scouting America
Prepared. For Life.™

Please mail donations to:

Greater LA Scouting
2333 Scout Way
Los Angeles, CA 90026

Your gift to Greater LA Scouting may be tax-deductible. Please consult with your tax adviser to determine the deductibility of your gift.

Please indicate, if applicable:

- I have, or plan to, include Greater LA Scouting in my estate plans.
- I want to discuss how I can increase the impact of my generosity, please contact me.

Questions?

E-mail: development@greaterlascouting.org
Phone: 213.413.4400

Alfredo Chavez -
alfredo.chavez@scouting.org

GreaterLASCouting.org



SCAN TO DONATE

When you give to Greater LA Scouting 100% of your donation stays local and supports LA youth!

Tax ID #95-1643982